

A banner with an orange and yellow background. It features a world map, a bar chart with vertical bars of varying heights, and several icons representing communication (speech bubbles), people (silhouettes), and documents. The Microsoft logo is in the top right corner.

Microsoft

Microsoft® Office

Enterprise Project Management Solution



Introduction to the Enterprise Project Management Solution

The Microsoft Office Enterprise Project Management (EPM) Solution capitalizes on your people, processes, and technology to generate the change needed to keep your organization current and competitive

- ◆ **Gain visibility, insight, and control across the entire project life cycle**
- ◆ **Adopt project management more easily**
- ◆ **Support your entire enterprise**
- ◆ **Extend and customize the platform**

Customer Challenges

Align work with strategic objectives

- ◆ Mapping investments in projects and resources to objectives becomes more difficult as organizations grow
- ◆ Executives need status reporting across all projects and programs
- ◆ Strategic decision-making requires up-to-date financial information on portfolio investments
- ◆ Users need a solution that will manage work from simple projects to large programs
- ◆ Capture the entire project life cycle to have better pipeline and scheduling insight

Customer Challenges

Enable faster and broader adoption

- ◆ Provide transparent and accessible project information
- ◆ Easily track time and integrate with familiar tools
- ◆ Enhance data with broad participation by accelerating your ability to adopt project management

Customer Challenges

Support distributed organizations

- ◆ A scalable infrastructure to share project knowledge and best practices across the enterprise
- ◆ Fast performance for large user adoption
- ◆ Manage collections of projects as unified programs

Customer Challenges

Easily integrate Microsoft Office Project 2007 and automate your processes

- ◆ Growing businesses need a solution that is flexible enough to be tailored to their needs
- ◆ Customizing a platform can be time-consuming
- ◆ Business solutions require integrating information from multiple systems
- ◆ Projects must also incorporate the workflow of business processes
- ◆ The learning curve for Solution Administrators is steep

EPM Solution Answers

Gain visibility and insight to align all work with strategic objectives

- ◆ **New! Resource Plans** provide information about high-level resource allocation when detailed resource assignments do not exist, and for projects where assignments do not accurately reflect resource distribution. These plans help ensure you have the right people on your high-priority projects for optimal delivery, and you hire appropriately skilled resources according to the demands of your projects.
- ◆ **New! Reporting Data Service (RDS)** transforms the data into a format suitable for end-user reporting.
- ◆ **New! The Cube Building Service (CBS)** enables users to choose what custom fields to include in the cube. The CBS consumes the RDS-generated data and metadata from the Reporting database in order to build cubes for end-user reporting.
- ◆ **New! Proposals** now enable project initiation on the Web. Tracking proposals will provide better high-plain analysis and will enable the use of business processes to track potential projects as well as capitalize on the functionality of Office Project 2007 to perform what-if analysis prior to approval.
- ◆ **New! Operations Work** that often follows completion of a project. Now you can track the full project life cycle.

EPM Solution Answers

Enable faster and broader adoption

- ◆ **New! Multi-Level Undo** enables users to test what-if scenarios and see the impact of potential changes to project schedules.
- ◆ **New! Budget Tracking** enables Project to support the method with which many organizations allocate their budgets to specify the amount of resources each project or program should use.
- ◆ **New! Cost Resources** enable you to more accurately monitor project financials and keep your project in sync with data in your accounting systems.
- ◆ **Enhanced! Templates** provide a wide range of predefined templates to help speed your project management process.
- ◆ **Enhanced! Timesheets** provide the basis for knowing what resources are available and which are working. They also serve as input for financial systems and analyzing progress.
- ◆ **Enhanced! Outlook Integration** enables team members to view and report progress on tasks—right from their Microsoft Office Outlook® calendars. Teams easily keep track of project tasks alongside other Outlook appointments and provide project managers with timely updates for accurate reporting.
- ◆ Enable partners, executives, and team members to view and interact with role-specific project data through Microsoft Office Project Web Access.

EPM Solution Answers

Enterprise-ready to scale to support distributed organizations

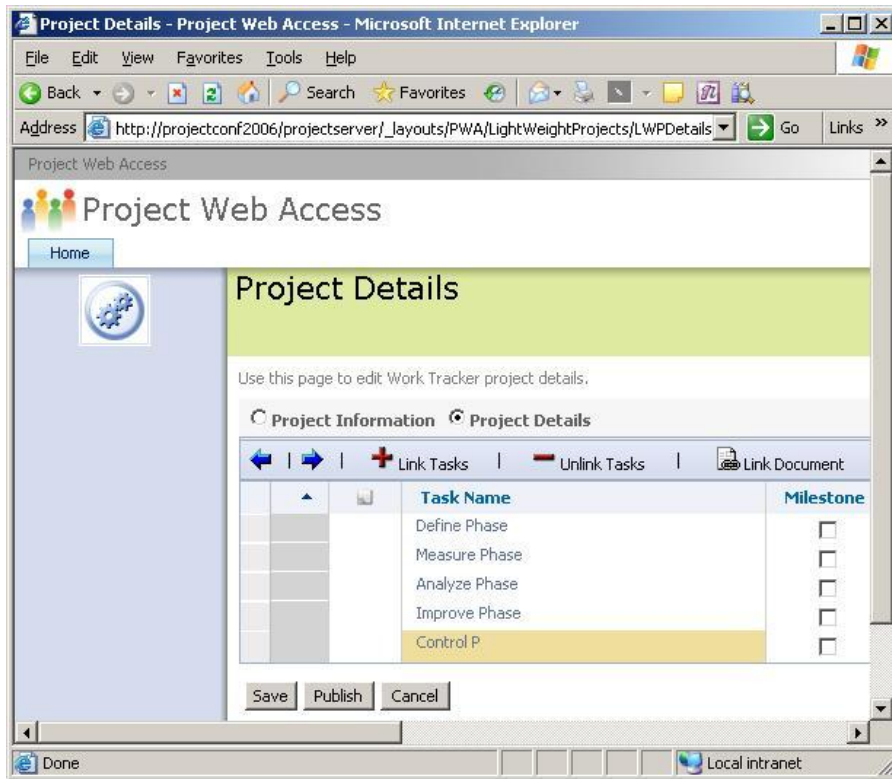
- ◆ **New! Programs** enable easy management of multiple sub-projects as a single object.
- ◆ **New! Deliverables** are published as a SharePoint list of committed dates to which other project managers can link their project or tasks.
- ◆ **New! Team Resources** enable work to be assigned to an entire team rather than an individual resource.
- ◆ **New! Assignment Owner** enables individuals other than the assigned resource to provide status updates on an assignment.
- ◆ Centralized document management enables the integration of Microsoft Office Project Server 2007, and Microsoft Windows® SharePoint® Services enables teams to centrally manage and track project-related documents.

EPM Solution Answers

Extensible and programmable to easily integrate Project and automate your processes

- ◆ **New! Active Cache** enhances performance and supports offline use.
- ◆ **Enhanced! Administration User Interface** saves time.
- ◆ **New! Event Model** enables use of the Windows Workflow Foundation to embed business processes.
- ◆ **New! Project Server Interface** updates the API so you can access all the functionality and data.
- ◆ **New! Project Web Access** uses Windows SharePoint Services (version 3) to expose all functions as Web Services.
- ◆ **New! Queuing Service** makes better use of server resources and improves response times.
- ◆ **New! Server-Side Scheduling** means custom interfaces no longer need to use Project Professional as the scheduling engine.

Align All Work with Strategic Objectives



Scenario

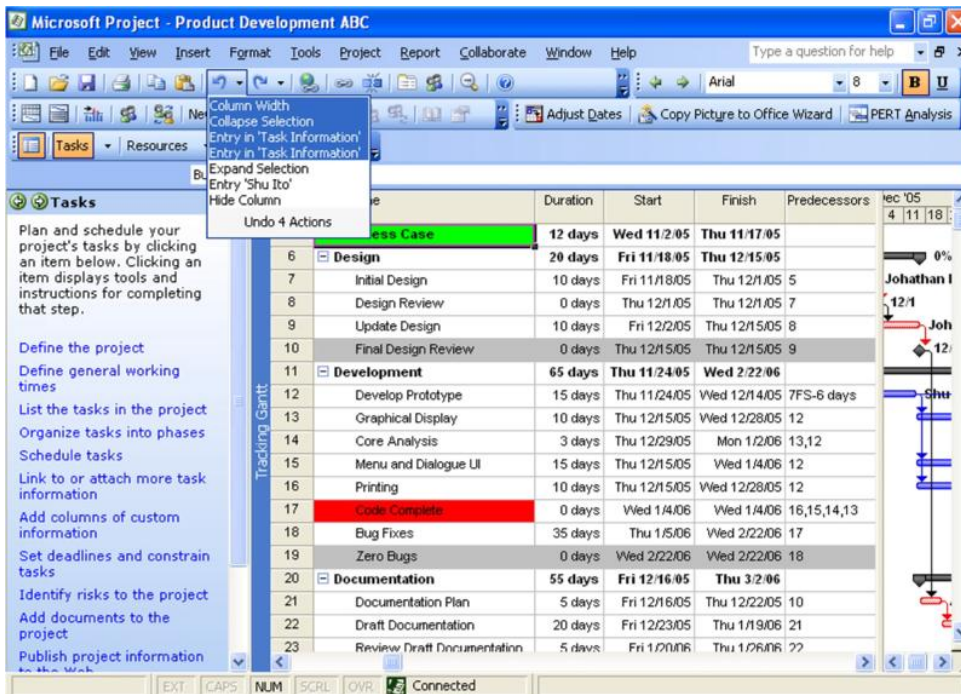
- ◆ Build a proposal in Project Web Access
- ◆ Create resource plans
- ◆ Promote the proposal into a full project
- ◆ View the work in the Project Web Access project center
- ◆ Create cubes for analytical reports for insight on status and progress
- ◆ Build an operations work plan to track work after the project's completion

demo

Enable Faster and Broader Adoption

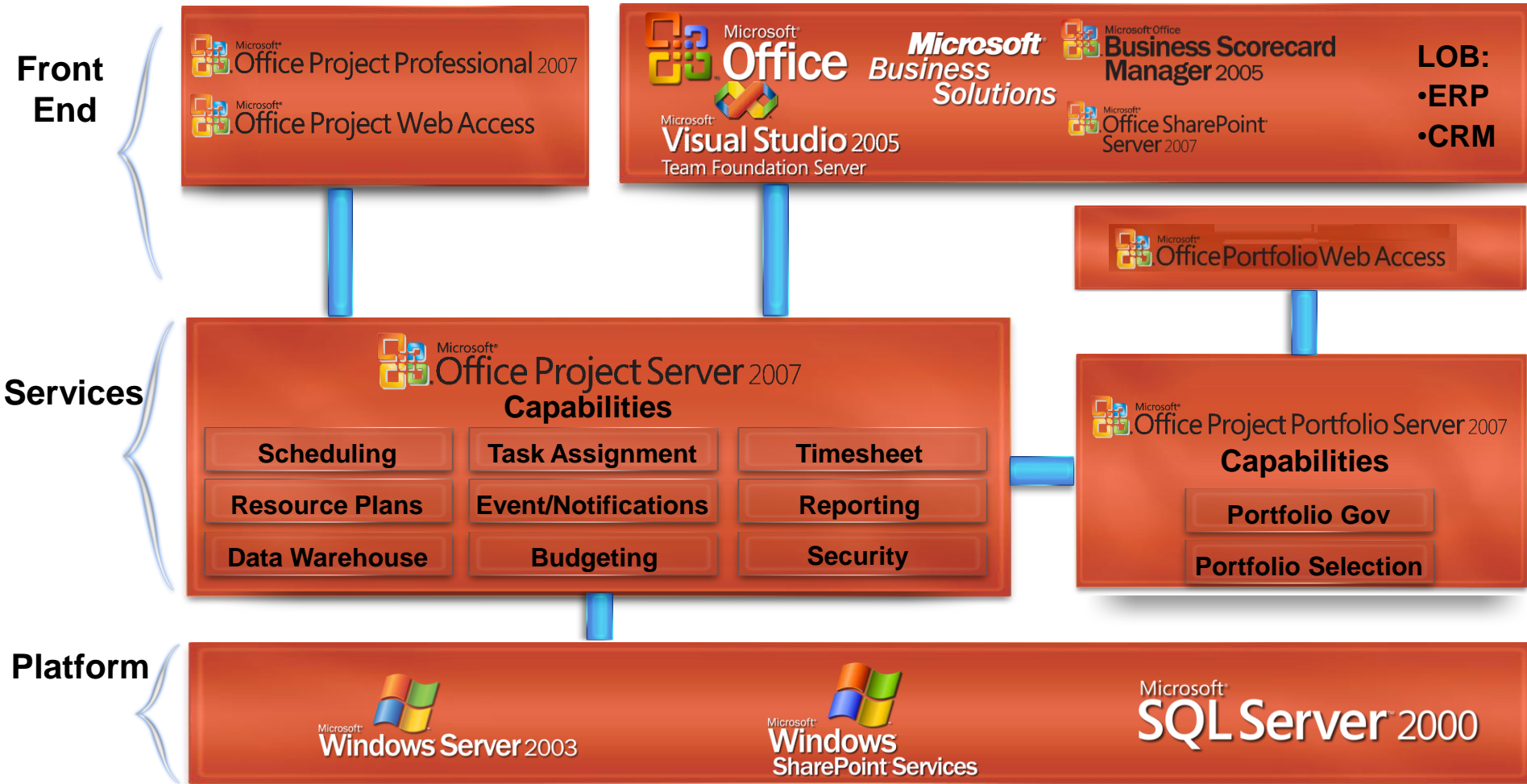
Scenario

- ◆ Build projects from enterprise templates or following the Project Guide
- ◆ Use familiar Microsoft functions such as cell highlighting to color cells
- ◆ Test and reverse scenarios with multiple-level undo
- ◆ Trace the source of schedules with the task drivers pane

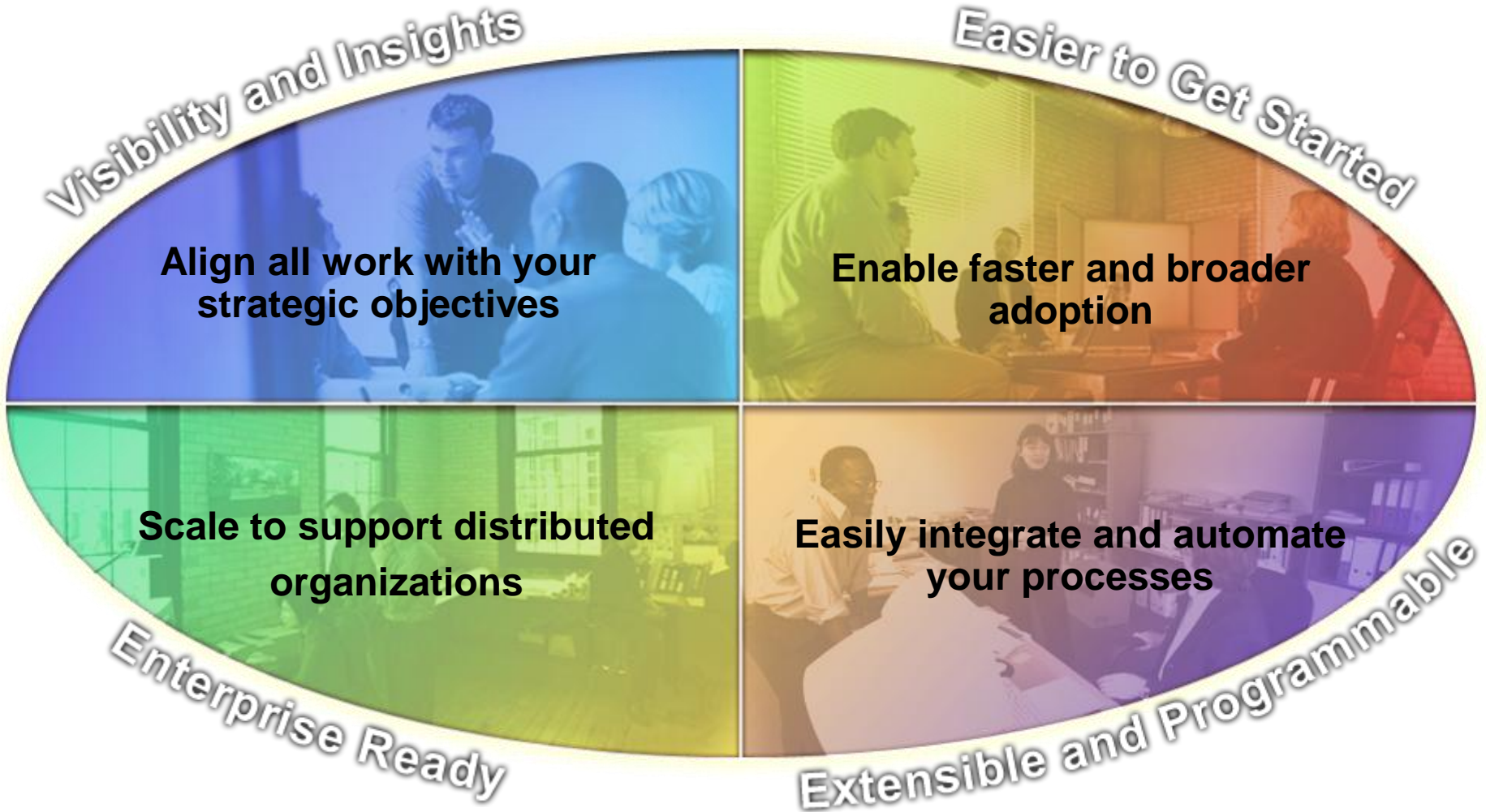


demo

Integrated Platform



EPM Solution Advantages



Summary of Key Benefits

Themes	New capabilities
Visibility and Insight <i>(Align work with your strategic objectives)</i>	Deep reporting and analysis across all work
	Top-down budgeting and decision-making
Easier to adopt <i>(Enable faster and broader adoption)</i>	Transparent and accessible scheduling
	Easy time tracking and integration with familiar tools
Enterprise-Ready <i>(Scale to support distributed organizations)</i>	High-performance infrastructure
	Scalable to large programs
Extensible and Programmable <i>(Easily integrate and automate your processes)</i>	Built on Microsoft .NET and SharePoint platforms
	Rich API for integration and automation

Microsoft[®]

www.microsoft.com/office/preview



Appendix







Functional Elements of the EPM Solution

- ◆ **Work Management**
 - ◆ Project
 - ◆ Programs
 - ◆ Portfolios
- ◆ **Resource Management**
 - ◆ Finances
 - ◆ People and Time
 - ◆ Materials
- ◆ **Services**
 - ◆ Analysis and Reporting
 - ◆ Workflow
 - ◆ Collaboration

Top Dozen New Features in Project EPM

- ◆ Active Cache
- ◆ Assignment Owner
- ◆ Commitments
- ◆ Cube Building Service
- ◆ Event Model
- ◆ Multi-Currency
- ◆ Programs
- ◆ Project Server Interface
- ◆ Queuing Service
- ◆ Reporting Data Service
- ◆ Server-Side Scheduling
- ◆ Timesheets

Top 10 Versioning Differences

Feature	Enterprise Project Management Solution
<p>Programs—Collections of projects that can be saved and published to Project Server. Key performance indicators (KPIs) and analysis at the program level.</p>	
<p>Deliverables—A Windows SharePoint Services list used to create and manage across project dependencies.</p>	
<p>Change Highlighting—When changes are made to a project, then all affected tasks are highlighted, such as dependencies and summary tasks. The highlights only reflect the most recent change.</p>	
<p>Task Statusing—Display task details and enable comments to be exchanged between a team member and project manager. Supports export to Timesheets.</p>	
<p>Multiple-Level Undo—Reverse the most recent series of changes (for example, undo and redo changes to views, data, and options).</p>	
<p>Visual Reports—Use Microsoft Office Excel® 2007 and Microsoft Office Visio® 2007 to produce charts, graphs, and diagrams based on Project data. Define custom report templates to share with other Project users. These templates and reports can be previewed from a dialog box in Project.</p>	

KEY:





 = feature included

 = improved feature

 = new in Microsoft Office Enterprise Project Management Solution



Top 10 Versioning Differences cont.

Features	Enterprise Project Management Solution
Assignment Owner —Now users can track time and assignments for other types of resources such as generic, cost, or material resources.	
Cube Building Service —Flexible UI-driven approach to building portfolio analyzer cubes with more data options.	
Report Center —View available reports in Project Web Access.	
Status Reports —Supports report aggregation and routing, while also enabling export of status reports to Microsoft Office Word 2003 and later.	

KEY:

 = feature included

 = improved feature

 = new in Microsoft Office Enterprise Project Management Solution








Integration with Office Servers and Services

- ◆ **Visual Reports take advantage of Visio Professional and Excel**
- ◆ **Wizard reporting into Word, Microsoft Office PowerPoint®, and Excel**
- ◆ **Event Model supports Windows Workflow Foundation**
- ◆ **Project Server Interface API**
- ◆ **Requires Microsoft Windows Server™ and Microsoft SQL Server**

Integration with Windows SharePoint Services

- ◆ **Project Web Access uses Windows SharePoint Services V3 as its platform**
- ◆ **Project uses Windows SharePoint Services functions for managing issues, risks, and documents**
- ◆ **Project Web Access imports Windows SharePoint Services Project Task Lists**

Product Family Packaging

	Retail	Channels
Desktop Solution		
 Microsoft® Office Project Standard 2007	\$599	All
EPM Solution		
 Microsoft® Office Project Professional 2007	\$999	All
 Microsoft® Office Project Server 2007	*	Volume licensing only
 Microsoft® Office Project Web Access	*	Volume licensing only
 Microsoft® Office Project Portfolio Server 2007	*	Volume licensing only
Microsoft Office Project Portfolio Server 2007 CAL	*	Volume licensing only



*Retail price not available. Volume licensing—only prices not yet announced.

Infrastructure Changes

- ◆ **New requirements**
 - ◆ **Microsoft .NET Framework 2.0**
 - ◆ **Windows SharePoint Services V3**
 - ◆ **Windows Workflow Foundation (optional)**
- ◆ **System requirements remain**
 - ◆ **SQL Server 2000 SP3+**
 - ◆ **SQL Analysis Services**
 - ◆ **SQL Reporting Services**
 - ◆ **Windows Server 2003**
 - ◆ **Internet Information Services 6.0**